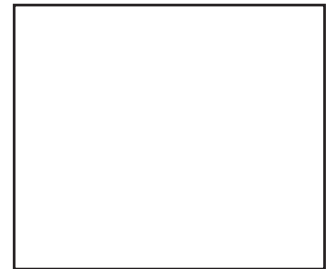
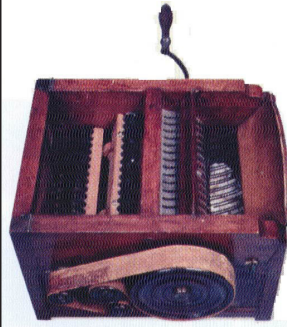
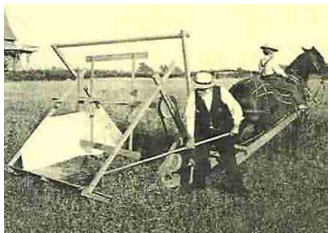


Jethro Tull introduced the seed drill, a device that cuts trenches and drops in seeds.



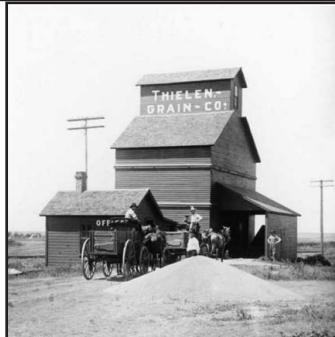
Eli Whitney invented the cotton gin, a machine that separates seeds from fiber.



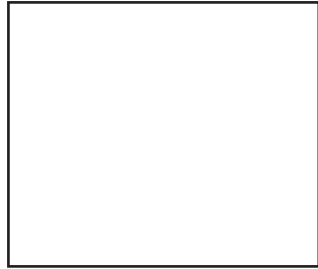
Cyrus McCormick patented the McCormick reaper, a grain harvesting machine.



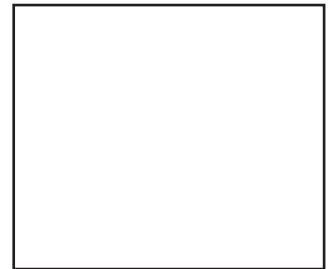
John Deere invented the steel plow, which was stronger, sharper, and more efficient than wooden or iron plows.



Joseph Dart invented and built the first grain elevator, a wooden structure with buckets used to load and unload ships.



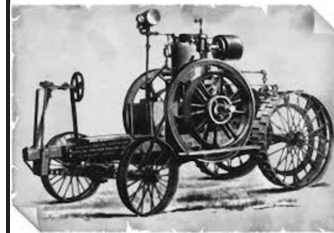
Silos, structures that store grain, came into use.



Glidden barbed wire, an inexpensive fencing used for livestock on rangeland, was patented.



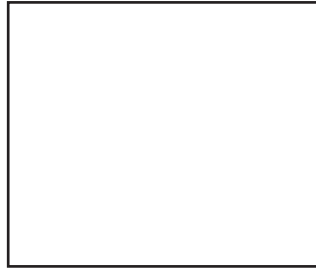
The horse-drawn combine, used to harvest wheat, came into use on West Coast farms.



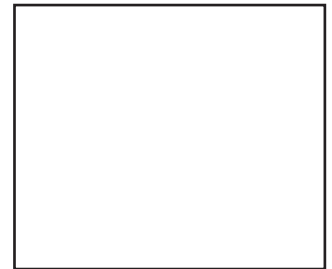
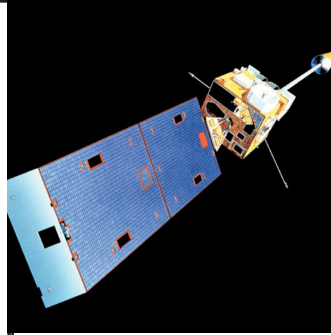
The first gasoline tractor was built by John Froelich.



The mechanical tomato harvester, used to harvest, sort, and load tomatoes, was developed.



Farmers began using computers to manage farm operations and monitor weather conditions.



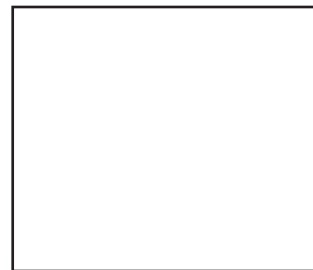
Farmers began using satellite technology to track and plan their farming practices.



Farm equipment manufacturers install GPS systems in tractors.



The first self-driving, autonomous tractor was unveiled at the Big Iron Farm Show in North Dakota.



Widespread use of drone technology by farmers.

1701	1793	1834	1837
1842	1873	1874	1884
1892	1959	1980	1994
2003	2012	2013	